

LAND CORNER RECORDATION CERTIFICATE
Filing Requirement of Act 74, Mich. P.A. 1970

For corners in

Macomb

(County)

Located In: Erin/Lake Township

Corner Code #

Acc-001

- | | | |
|------------------------------------|--------------------------|-------|
| 1. Public Land Survey | T <u>1N</u> R <u>13E</u> | _____ |
| | T _____ R _____ | _____ |
| | T _____ R _____ | _____ |
| | T _____ R _____ | _____ |
| 2. Property Controlling in Section | S _____ T _____ R _____ | _____ |
| | S _____ T _____ R _____ | _____ |
| 3. Miscellaneous Property in Sec. | S _____ T _____ R _____ | _____ |
| | S _____ T _____ R _____ | _____ |

Register of Deeds Stamp & File Number

4. Lot No. _____, Recorded Plat _____
 5. Private Claims Intersection of "G" line and Private Claim 599

I, Craig P. Amey, in a field survey on August 8, 1995 do hereby certify that under requirements of P.A. 74, Michigan P.A. of 1970, the corner points mentioned in lines 1 and 2 above were in conformance with regulations and rules therefore as required in the current manual of survey instructions of the United States Department of the Interior, Bureau of Land Management or by a decree of a Court of Law and for that the corner points mentioned in lines 3, 4 and 5 above were in conformance with the rules of the Michigan Board of Land Surveyors or by a Decree of a Court of Law; established, re-established, monumented, re-monumented, recovered, found as expressed below:

NOTE: Not more than 4 corners, all in the same town and range, may be recorded on this certificate.

A	B	C	D	E	F	G	H	I	J	K	L	M
1												
2	6		5		4		3		2		1	
3												
4	7		8		9		10		11		12	
5												
6	18		17		16		15		14		13	
7												
8	19		20		21		22		23		24	
9												
10	30		29		28		27		26		25	
11												
12	31		32		33		34		35		36	
13												

A. Description of original monument and accessories and/or subsequent restoration:
 1818 GLO William Preston No witnesses remain

B. Description of corner evidence found and/or method applied in restoring or reestablishing corner:
 To reestablish the corner, ties from adjacent subdivisions were used. "Dyer Subdivision", as recorded in Liber 11, Page 11, Macomb County Plats, is coincident with the northwesterly line of PC 599. "Lake View Garden Sub'n" is coincident with "G" line and the northwesterly line of PC 599. Original monumentation for "Lake View Garden Sub'n" no longer exists due to road widening. Two original monuments for "Dyer Subdivision" were found and used to reestablish this corner. The southwesterly corner of the subdivision was used with building lines to establish the south line of the subdivision. An interior monument was used along with the east quarter post of section 28 to establish the east line of the subdivision which is coincident with "G" line. By extending the "G" line southerly record distance (which is the location of the corner) and extending the south line of the subdivision southeasterly record distance, a gap of 2.65 feet is created as compared to the record distance of 2.8 feet. This gap is also coincident with the northwesterly line of "Lake View Garden Sub'n" and is within 0.3 feet of record distance to property irons within the subdivision, confirming the location of this corner. A sketch of this method of reestablishing this corner is included with the dossier submitted to the Macomb County Remonumentation Peer Review Committee.

N 1689.37 East quarter post of section 28 (G10)

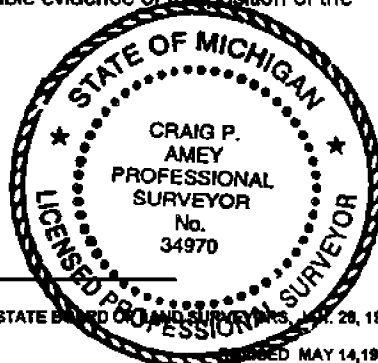
C. Description of monument for corner and accessories established to perpetuate locating the position of the corner:

- PLACED 3/4" x 24" IRON WITH MCR CAP #34970 IN A NEW MONUMENT BOX
- AZ 45° 122.78 Chiseled "X" in the northwest bolt on the base of a light pole
- AZ 145° 64.83 Southwest corner of "Shores Medical Inc." #23550 Harper
- AZ 276° 69.90 Southeast corner of a brick building #23513 Harper
- AZ 133° 50.06 Chiseled "X" in the southeast bolt on the base of a light pole

The selected location is accepted by me and is generally accepted by professional surveyors as the best available evidence of the position of the original corner.

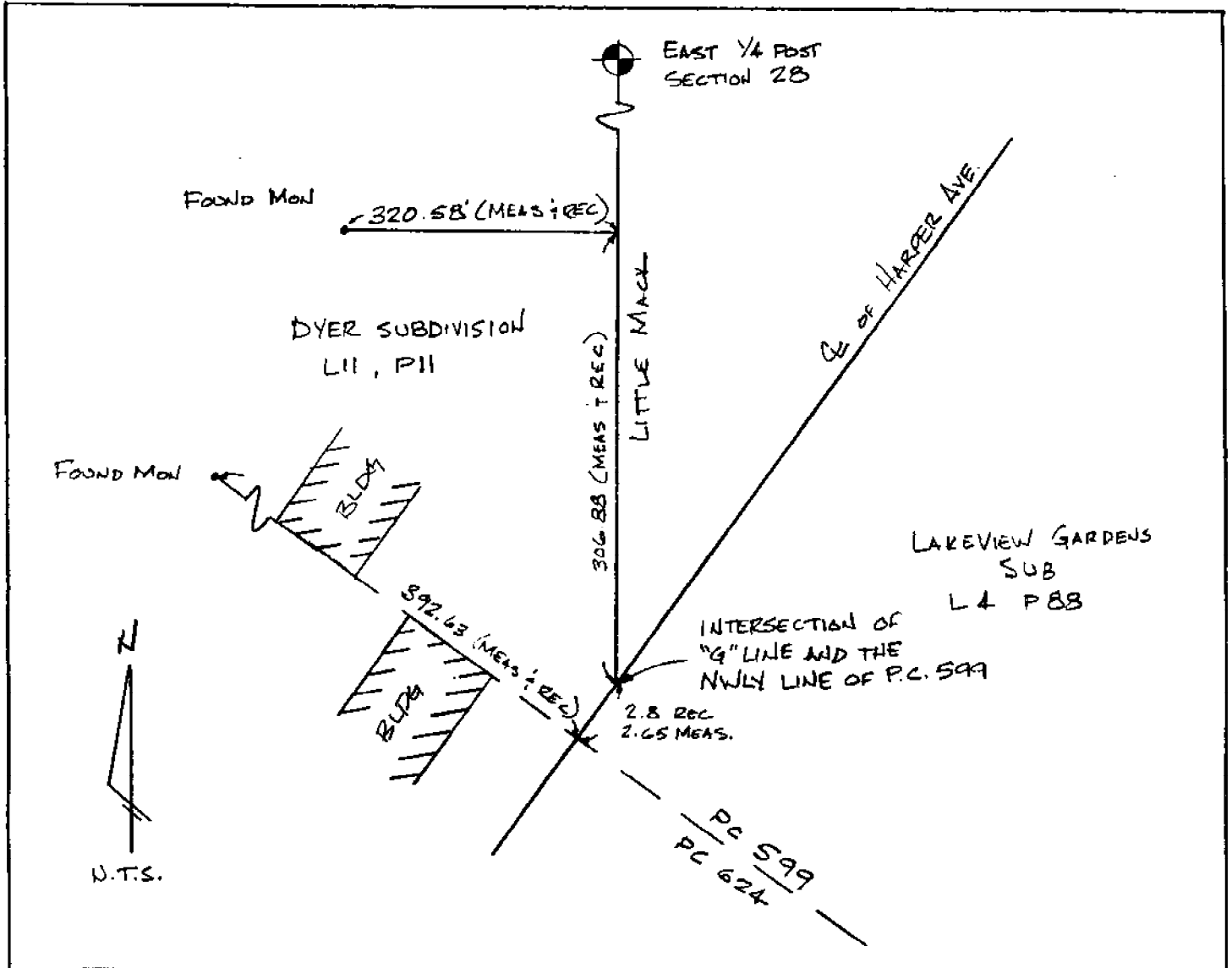
See BACK

ACCEPTED BY THE MACOMB COUNTY SURVEY PEER GROUP AS THE OFFICIAL CORNER UNDER MICHIGAN PUBLIC ACT 345 OF 1990 AT A MEETING HELD ON 8-15-95
William E. Soderberg
 WILLIAM E. SODERBERG, P.S., CHAIRMAN



Signed by C. P. Amey Date 12-15-95
 Surveyor's Michigan License No. 34970

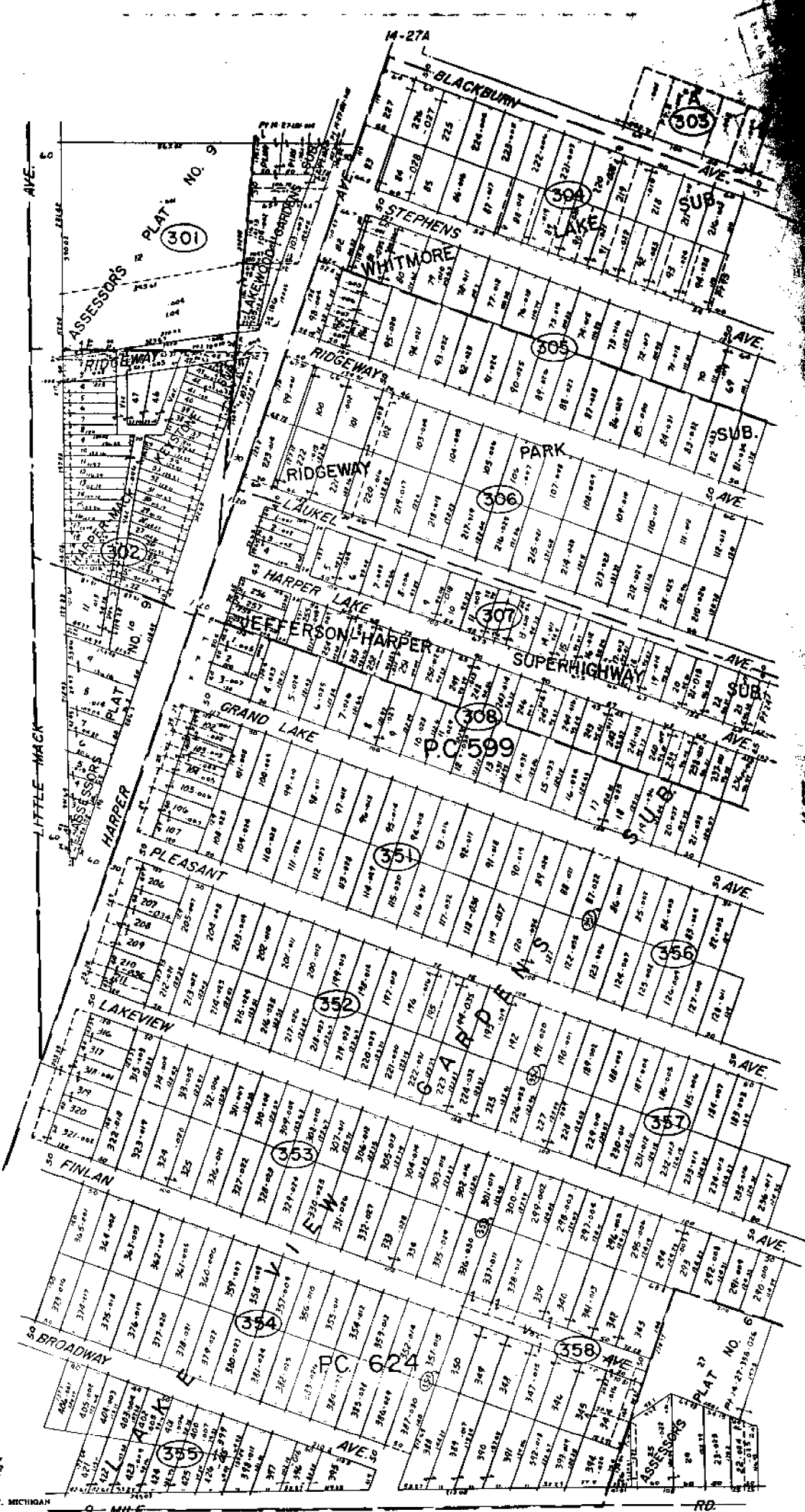
FORM APPROVED BY MICHIGAN STATE BOARD OF LAND SURVEYORS, MAY 14, 1975
 REVISED JAN, 1983



C0292284 LIBER:06862 PAGE:846 11:11A 12/21/1995
 CARMELLA SABAUGH-MACOMB COUNTY, MI REG/DEEDS



14-28H

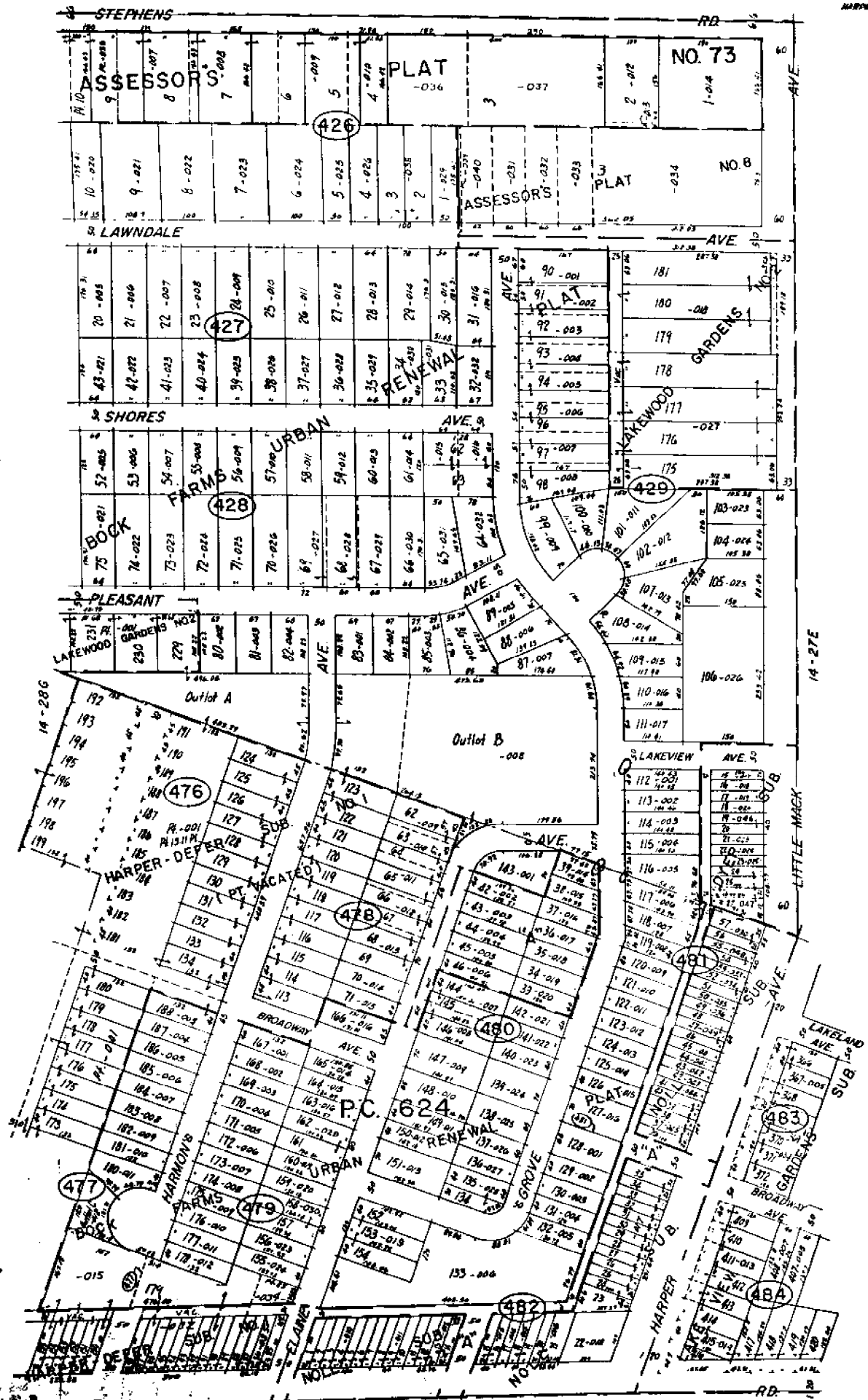


REV. 1/27
REV. 1/27
REV. 5/27

COPYRIGHT 1978
MACOMB COUNTY, MICHIGAN

SCALE: 1"=100'
1885
14-27E

ST. CLAIR SHORES
PT. SEC. 27 & PT. P.C. 599, 624 T.IN. R13E



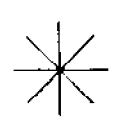
ST. CLAIR SHORES
E 1/2 SE 1/4 SEC. 28 & PT. PC. 624 T.1N. R.13E.

SCALE 1/8" = 1'

14-28

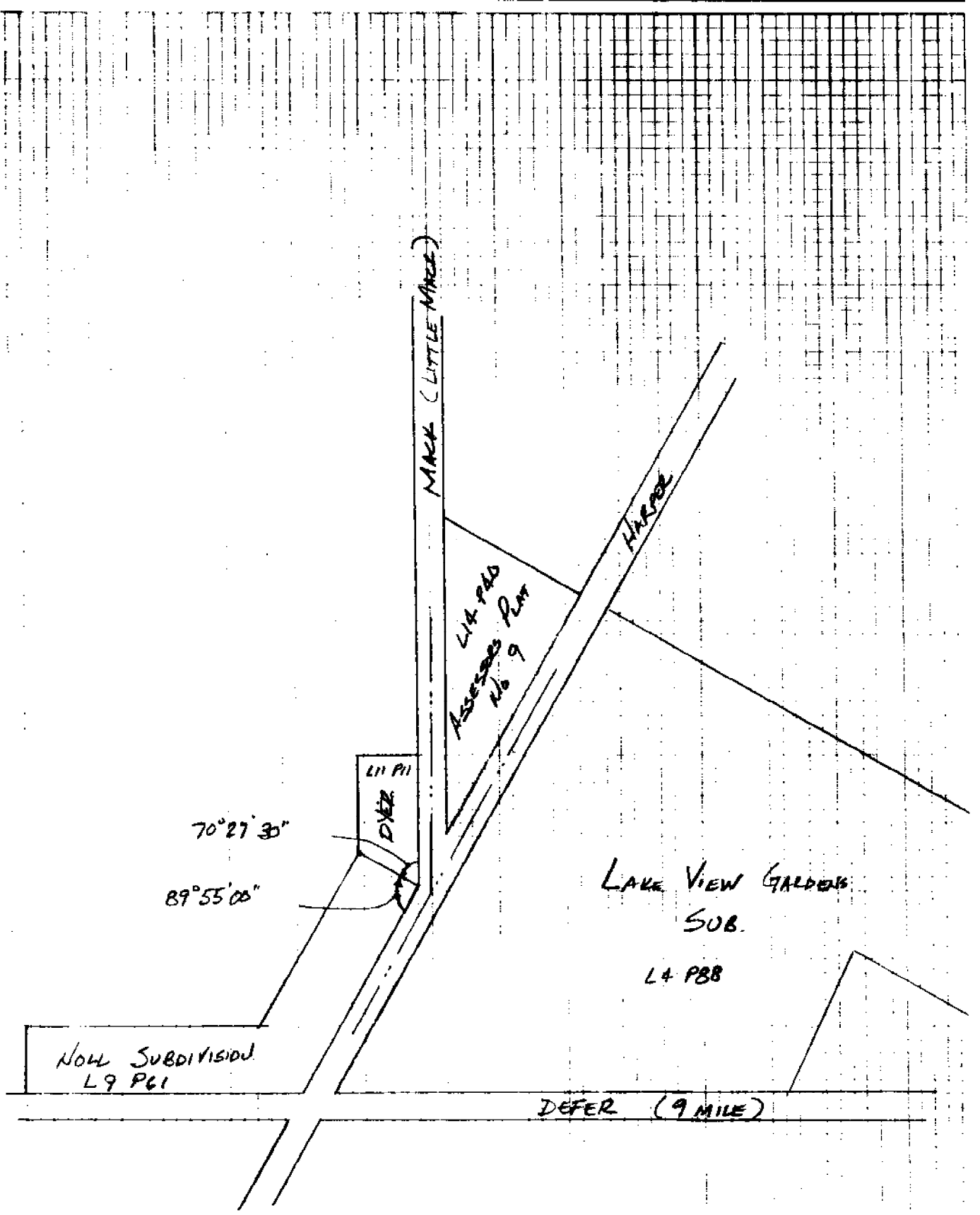
JL

PROJECT N° : _____
DESCRIPTION : _____



INDICATE
NORTH

DATE : _____
CREW : _____
PAGE N° : _____ OF _____



(313) 726-1234

ANDERSON, ECKSTEIN & WESTRICK, INC.



Civil Engineers
Land Surveyors