



**INNOVATE  
MOUND**

# **WEB MAP GUIDE**

[GIS.MacombGov.Org/InnovateMound](https://GIS.MacombGov.Org/InnovateMound)

Innovate Mound is an initiative to rebuild one of the most important corridors in Southeast Michigan: Mound Road. The vision of this partnership behind this effort is a roadway that incorporates the future of mobility and technology.



# BASIC FEATURES OVERVIEW



Innovate Mound

Innovate Mound   



**Zoom Control**

Major Employers

This map highlights major employers within and nearby the Mound Road Corridor.

This data is tracked through the [Macomb County Department of Planning & Economic Development's Economic Development Services division](#).

**Legend:**  
Shows how the data is displayed on the map.

**Links & Share:**  
Visit the Innovate Mound Website or share the web map on social media.  
(click on list below to expand)

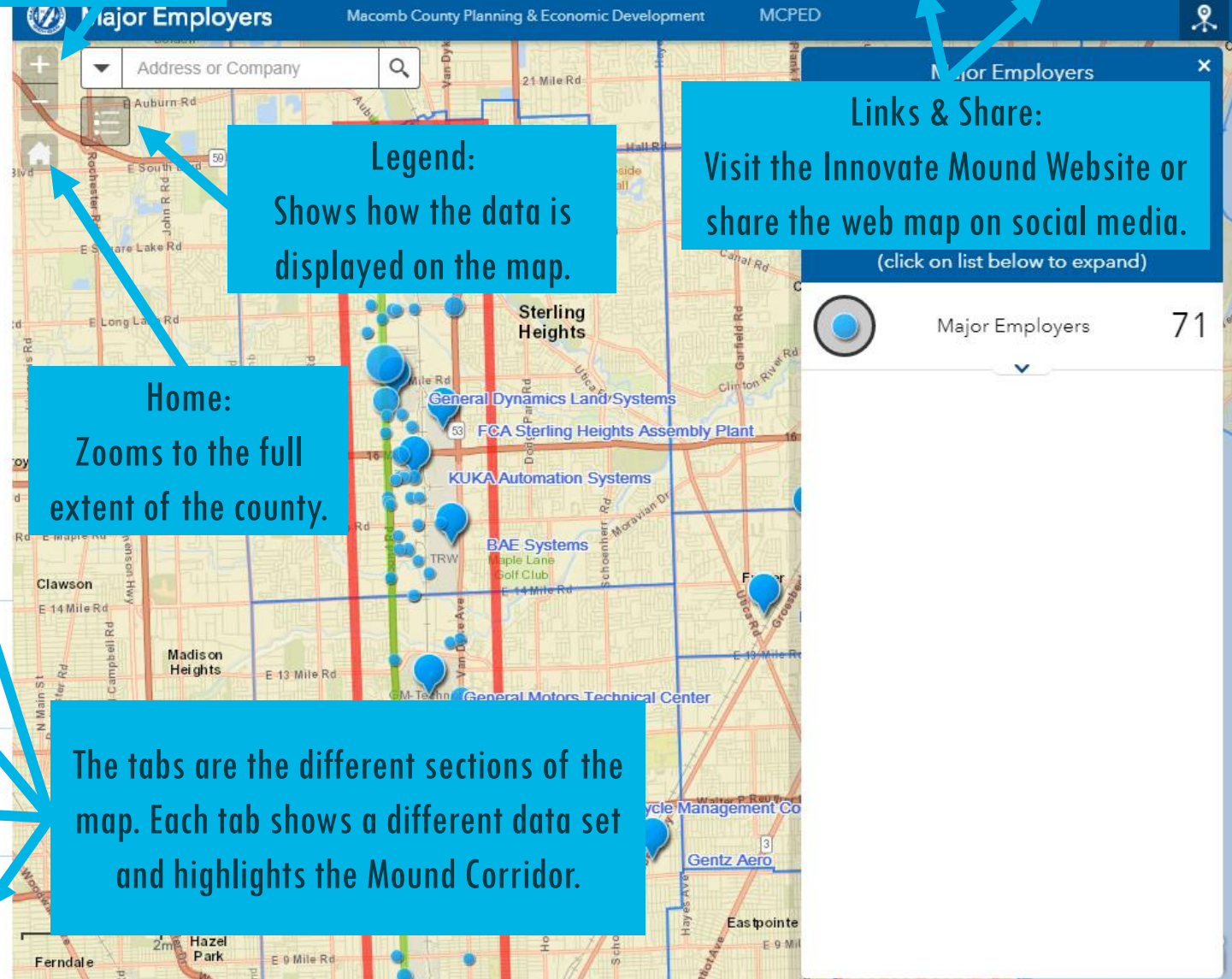
**Home:**  
Zooms to the full extent of the county.

Economic Investments

Defense Contract Companies

Defense Contracts Awarded 2012-16

The tabs are the different sections of the map. Each tab shows a different data set and highlights the Mound Corridor.



# LIST TOOL



Innovate Mound

Innovate Mound



## Major Employers

This map highlights major employers within and nearby the Mound Road Corridor.

This data is tracked through the [Macomb County Department of Planning & Economic Development's Economic Development Services division](#).

## Economic Investments

## Defense Contract Companies

## Defense Contracts Awarded 2012-16

**Major Employers**

Gener

This lists out the data the tab is showing.  
Ex: Major Employers

When you click on a company name in the list tool the associated pop up and location will appear on the map.

**Major Employers** (click on list below to expand)

Major Employers 71

- United States Department of the Army
- General Motors LLC
- THE ARMY UNITED STATES DEPARTMENT OF
- FCA US LLC
- Bridgewater Interiors, L.L.C.
- N A SODECIA INC
- Milliken Millwork, Inc.
- U S Manufacturing Corporation
- SODECIA USA AUTOMOTIVE CORP.
- Flex-N-Gate Corporation
- JOHNSON CONTROLS, INC.
- ATCO INDUSTRIES, INC.
- MAGNA POWERTRAIN USA, INC.
- Waltonen Engineering, Inc.
- DCS Corporation
- Bosch Automotive Service Solutions Inc.

FCA US LLC

Employees 670


Community Warren

Zoom to

# TOTALS TOOL



Innovate Mound

Innovate Mound   



Major Employers

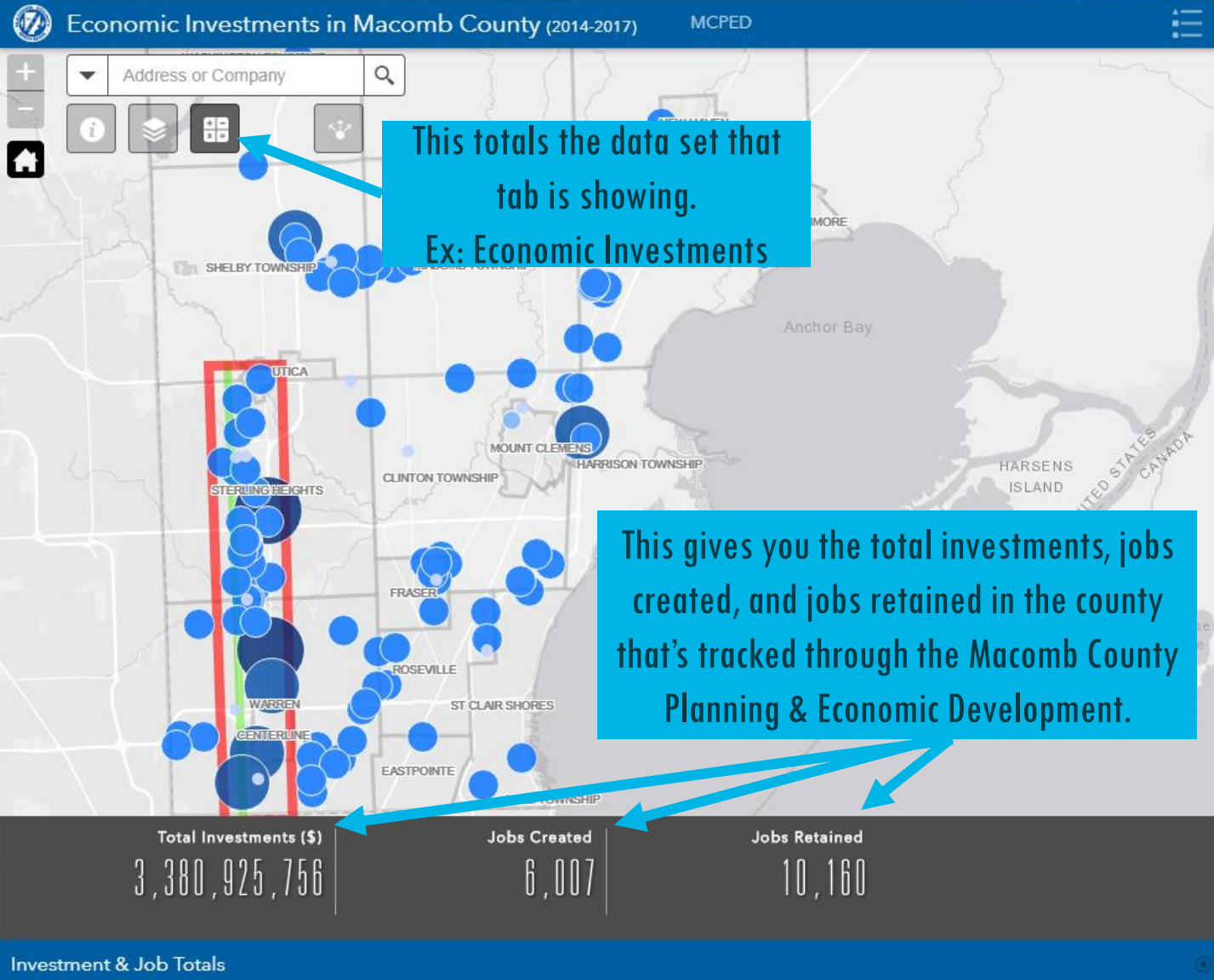
Economic Investments

This map highlights where businesses are investing, creating jobs, and retaining jobs in Macomb County.

This data is tracked through the Macomb County Department of Planning & Economic Development's Economic Development Services division.

Defense Contract Companies

Defense Contracts Awarded 2012-16



# SEARCH TOOL & POP - UPS



The screenshot displays the Innovate Mound web application interface. At the top left, the 'Innovate Mound' logo is visible. The main navigation menu on the left includes 'Major Employers', 'Economic Investments', 'Defense Contract Companies', and 'Defense Contracts Awarded 2012-16'. The central map area is titled 'Macomb County Defense Contract Companies'. A search bar at the top of the map contains the text 'Bae|' and a dropdown menu is open, listing various search results including 'Defense Contract Companies', 'Bae Systems', and 'Land&Armaments L.P.'. A blue callout box with an arrow points to the search bar, containing the text: 'Search by address or company name here.' Another blue callout box with an arrow points to the dropdown menu, containing the text: 'After you find the address or company you can click from the drop down in the search bar and the associated location will pop up on the map.' On the right side of the map, a legend identifies 'Defense Contract Companies' (blue dot), 'Mound Road Corridor' (red line), and 'Mound Road' (green line). A pop-up window is shown over a specific location on the map, displaying the name 'Bae Systems Land&Armaments L.P.' and the address 'Community Sterling Heights'. A blue callout box with an arrow points to this pop-up, containing the text: 'Pop Ups show up when you click on a feature on the map or via a tool. The pop ups include additional information on the feature.'



# Contact Information:

[InnovateMound.Org](http://InnovateMound.Org)



[Planning@MacombGov.Org](mailto:Planning@MacombGov.Org)



CITY OF  
**Sterling  
Heights**  
InnovatingLiving

