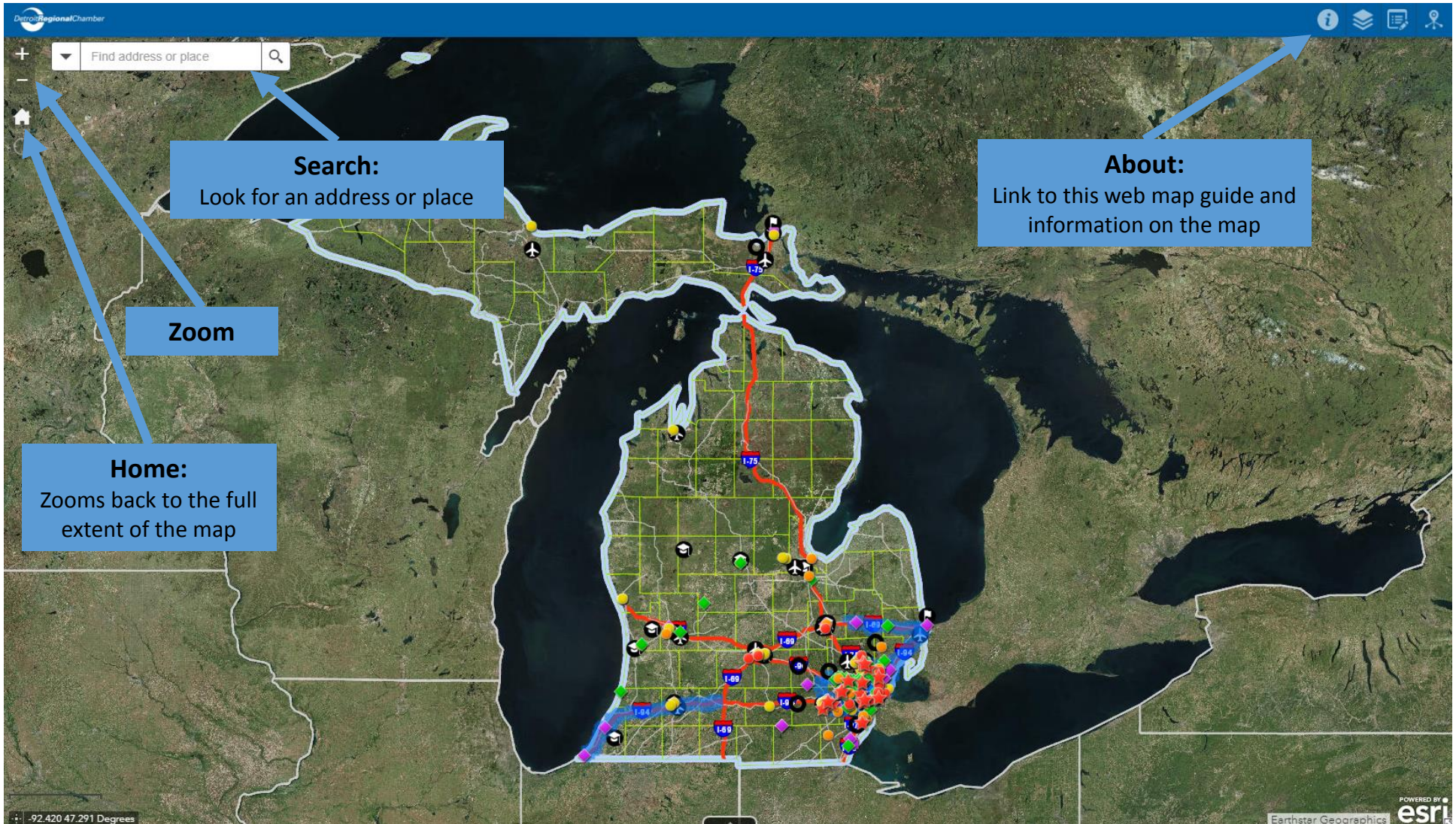


# MICHIGAN IS AUTO: Edit Web Map

Macomb County Planning &  
Economic Development

Detroit Regional Chamber

# OVERVIEW



# LAYER LIST

The screenshot displays a web-based GIS application interface. At the top left, there is a search bar with the text "Find address or place" and a magnifying glass icon. The map shows a satellite view of the Detroit area with several data layers overlaid, including a grid, roads, and various colored markers. A blue box labeled "Layer List" points to the right-hand panel. Another blue box labeled "Able to turn different data layers on / off on the map." points to the "TOP SUPPLIERS" layer in the list. The "Layer List" panel on the right contains the following layers:

- Operational Layers
  - OEM HEADQUARTERS / R&D
  - OEM ASSEMBLY PLANTS
  - COMPONENT ASSEMBLY PLANTS
  - TOP SUPPLIERS
  - PROVING GROUND
  - ENTREPRENEURIAL
  - MOBILITY PROJECT
  - CONNECTED MOBILITY
  - TRANSPORTATION
  - UNIVERSITIES
  - MOBILITY PROJECTS
  - MIA\_BaseMap

A context menu is open for the "TOP SUPPLIERS" layer, showing the following options:

- Zoom to
- Transparency
- Disable Pop-up
- Move up
- Move down
- Open Attribute Table
- Show Item Details

The bottom left corner of the map displays the coordinates: -90.794 41.415 Degrees.

# LIST OF DATA

**Find address or place** [Search Icon]

**List of Data**

Able to turn different data layers on / off on the map by clicking on the circle symbol.

You can expand the list to see how many assets are in each layer then see where it is on the map.

**COMPONENT ASSEMBLY PLANTS: General Motors Grand Rapids Operations**  
Street: 2100 Burlingame, SW  
City: Wyoming  
Zip: 49509  
Website: [More info](#)  
Zoom to [Close Icon]

**List of Data**

**MICH auto**

- OEM HEADQUARTERS / R&D 18
- OEM ASSEMBLY PLANTS 12
- COMPONENT ASSEMBLY PLANTS 28

- Street: 2100 Burlingame, SW
- Street: 5800 Ann Arbor Rd.
- Street: 4000 St. Jean Avenue
- Street: 3675 East outer Drive
- Street: 35777 Van Dyke
- Street: 2300 Van Horn Rd.
- Street: 22800 Mound Rd.
- Street: 3001 Miller Road
- Street: 3001 Miller Road
- Street: 3001 Miller Road
- Street: 3001 Miller Road
- Street: 36200 Plymouth Road
- Street: 10300 Textile Road
- Street: 701 E. Saint Clair
- Street: 39000 Mound Rd.
- Street: 41111 Van Dyke
- Street: 24180 Allen Rd.

-93.035 48.090 Degrees

# EDIT DATA: Add New Data

Find address or place

The first step in editing the data is figuring out if you are adding new data or wanting to update existing data.

1.) Click on the data layer you want to add new data to.  
Ex: Top Suppliers

Edit the Data

Edit the Data

Select a template to create features

Feature Layers

All

Search Templates

- OEM HEADQUARTERS / R&D
- OEM ASSEMBLY PLANTS
- COMPONENT ASSEMBLY PLANTS
- TOP SUPPLIERS
- PROVING GROUNDS
- ENTREPRENEURIAL RESOURCES
- MOBILITY PROJECTS

-93.354 46.647 Degrees

# EDIT DATA: Add New Data

2.) Find the location of the new asset then click on the map

3.) Fill out the necessary information then select “Close” and the changes will be automatically saved.

**Edit the Data**

Select a template to create features

Feature Layers: All

Search Templates

- OEM HEADQUARTERS / R&D
- OEM ASSEMBLY PLANTS
- COMPONENT ASSEMBLY PLANTS
- TOP SUPPLIERS
- PROVING GROUNDS
- ENTREPRENEURIAL RESOURCES
- MOBILITY PROJECTS

**TOP SUPPLIERS**

Asset:

Street:

City:

Zip:

Website:

Latitude:

Longitude:

# EDIT DATA: Update Existing Data

1.) Find the data point that needs to be updated then click the edit widget

2.) Click on the point and the pop – up with information will appear.

3.) Either update the information in the pop – up then select “Close” or delete the point by selecting “Delete”.

\*All changes are final (no undo) so be careful when editing the data.

**Edit the Data**

Find address or place

**TOP SUPPLIERS**

City	Detroit
Zip	48211
Website	http://www.aam.com
Latitude	42.388024
Longitude	-83.067184
Comment_	

Delete Close

**Edit the Data**

Select a template to create features

Feature Layers  
All

Search Templates

- OEM HEADQUARTERS / R&D
- OEM ASSEMBLY PLANTS
- COMPONENT ASSEMBLY PLANTS
- TOP SUPPLIERS
- PROVING GROUNDS
- ENTREPRENEURIAL RESOURCES
- MOBILITY PROJECTS



If you have any questions, comments, or concerns?

Email:  
[Planning@MacombGov.Org](mailto:Planning@MacombGov.Org)