



GROESBECK: Web Map Guide

Macomb County Planning
& Economic Development

OVERVIEW



GOAL

- Encourage economic development and redevelopment along Groesbeck Highway in Macomb County.
- Promote Groesbeck Highway as a key transportation network by showcasing economic development success stories and available prime properties along the highway.

DATA

- Prime Properties = Sites that are available and ready for economic development and redevelopment.
- Success Stories = Economic development projects that have had a successful and positive outcome.
- Parcels (available when zoomed in on map) = Shows property boundaries and provides a link to current tax information.

METADATA

- Property information (prime properties and success stories) are submitted and updated by local communities involved in the Groesbeck Highway Development initiative.
- Parcel data is provided by Macomb County Planning & Economic Development Department.

BASIC FEATURES



Goesbeck Corridor Properties Macomb County Planning & Economic Development Find address or place

Zoom Control

Home:
Zooms back to full extent

Search:
Look up an address and zoom to that area

Legend:
See how the data is symbolized and what's showing on the map

Print:
Print what's shown in your map view

Share:
Easily share this map on social media

About:
Shows the information from the welcome pop-up

Map labels: UTICA, MACOMB TOWNSHIP, MOUNT CLEMENS, CLINTON TOWNSHIP, HARRISON TOWNSHIP, STERLING HEIGHTS, FRASER, ROSEVILLE, WARREN, CENTERLINE, ST. CLAIR SHORES, EASTPOINTE, LACINE TOWNSHIP, Lake St Clair, DICKINS ISLAND, Big Muscawoot Bay, SEAWAY ISLAND.

Coordinates: -83.162 42.644 Degrees

Scale: 2mi

POWERED BY esri

LIST OF PROPERTIES



Browse the variety of properties in a list format that's connected to the map.

Click on either prime property, success story, or other to expand the list.

Select an individual property then the associated pop-up on the map will show up.

List of Properties

Success Story: New Taco Bell

ADDRESS 103 1/2 N GROESBECK HWY
CITY MOUNT CLEMENS
PARCEL ID 11-10-452-030
HIGHLIGHTS Contact MCPED for more information
TAX INFO [More info](#)

Image
No image

Zoom to

List

Groesbeck Properties 18

- Prime Property 13
- Success Story 5
- Apartment Redevelopment
- D-Mark, Inc.
- New Taco Bell
- Shiloh Industries
- Middleton Auto Parts

Map Labels: SHELBY TOWNSHIP, UTICA, MACOMB TOWNSHIP, CLINTON TOWNSHIP, FRASER, ROSEVILLE, WARREN, CENTERLINE, EASTPOINTE, ST CLAIR SHORES, LAKE TOWNSHIP

Map Coordinates: -83.106 42.434 Degrees

Scale: 2mi

POWERED BY esri

BASEMAP



Groesbeck Corridor Properties Macomb County Planning & Economic Development Find address or place

Change the background imagery of the map with the basemap gallery.

Basemap Gallery

Success Story: New Taco Bell

ADDRESS	103 1/2 N GROESBECK HWY
CITY	MOUNT CLEMENS
PARCEL ID	11-10-452-030
HIGHLIGHTS	Contact MCPED for more information
TAX INFO	More info

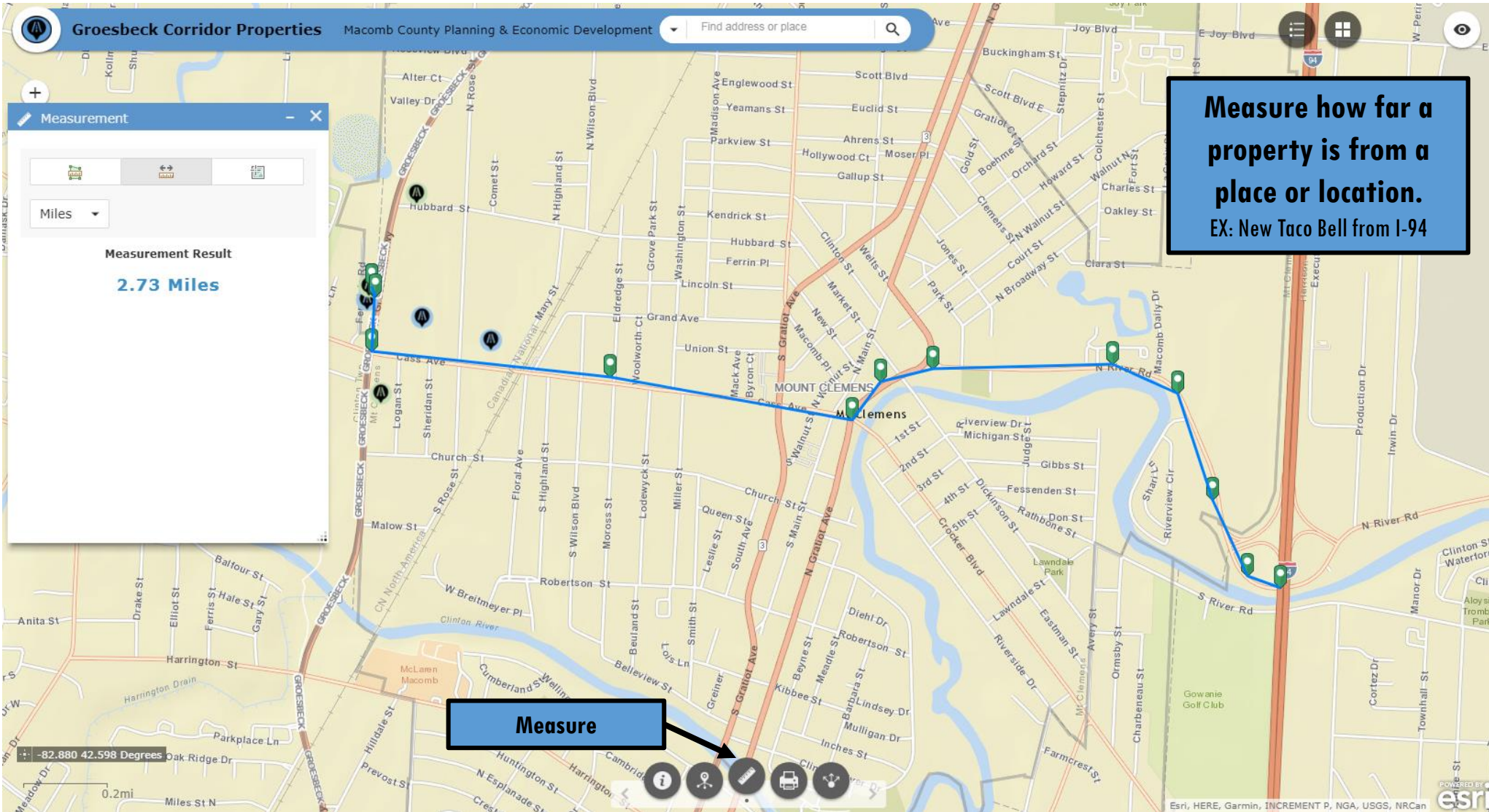
Image
No image

Zoom to

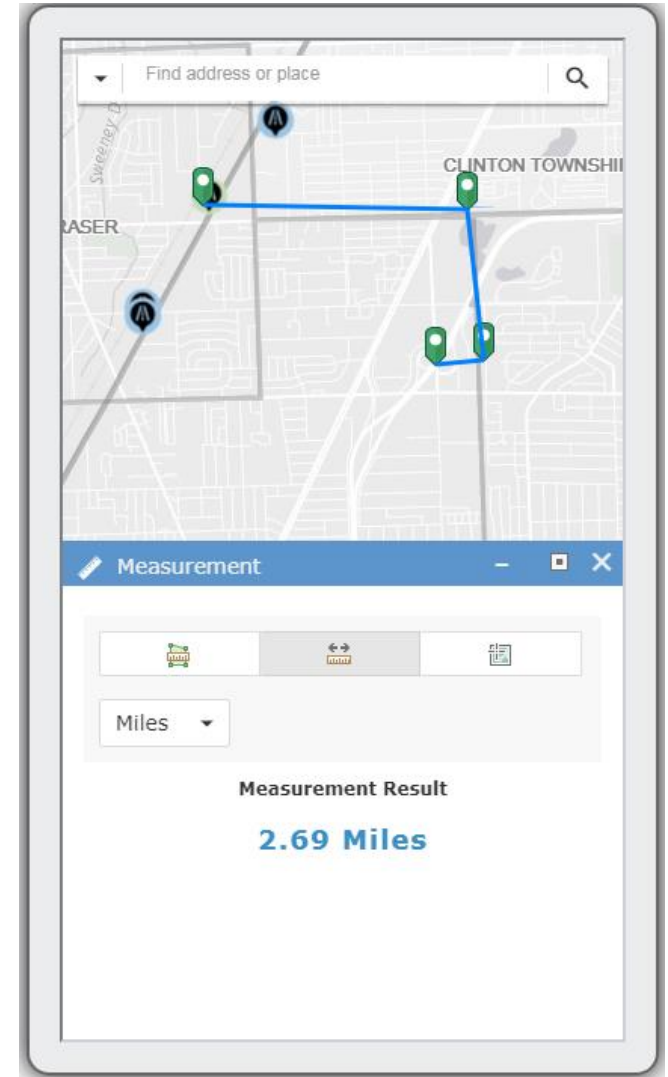
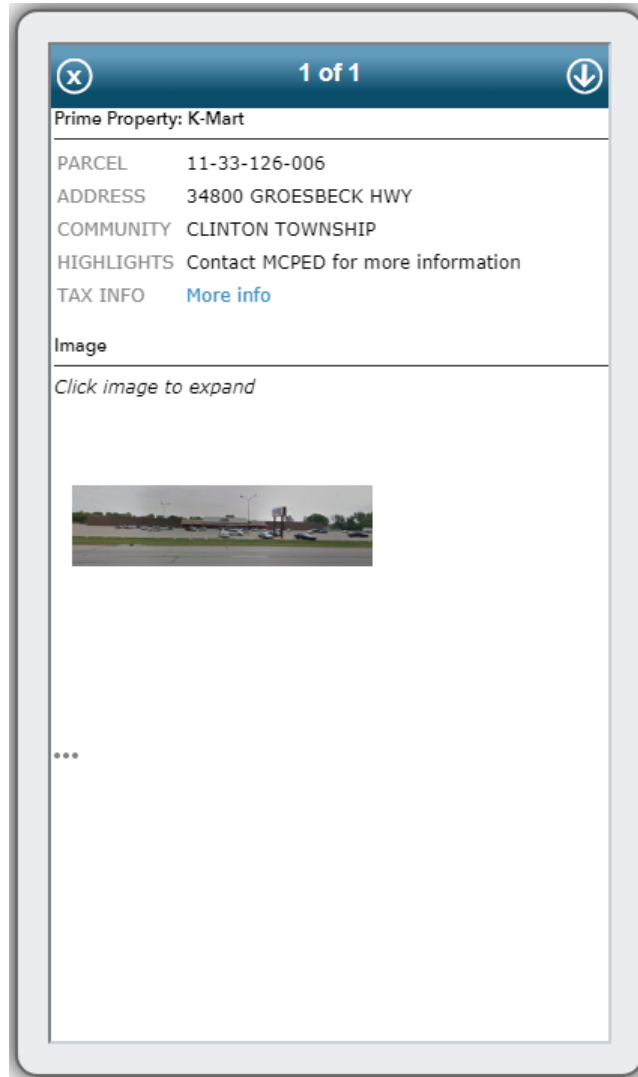
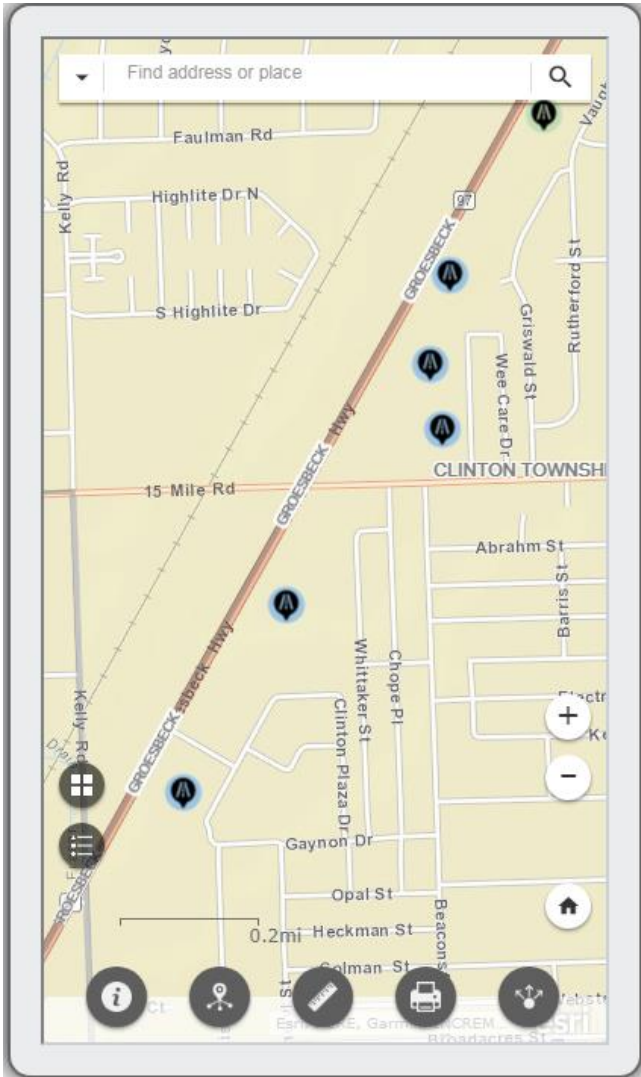
-82.901 42.602 Degrees

POWERED BY **esri**

MEASURE



MOBILE FRIENDLY



QUESTIONS OR COMMENTS ABOUT THE GROESBECK PROJECT?



Macomb County Planning & Economic Development

Email: Planning@MacombGov.Org