

# MACOMB COUNTY SHERIFF'S OFFICE: Internal Site & Web App Guide



Macomb County Sheriff's Office

Macomb County Planning & Economic Development

# OVERVIEW

---



## GOAL

- Provide a user – friendly tool for the Macomb County Sheriff's Office to analyze and get valuable insights out of the crime incident data.

## DATA

- Crime incident data is updated daily at 8pm.
- Layers of Data:
  - Year = Shows all incidents that have occurred within the past year.
  - Week = Shows all incidents that have occurred within the past week.
  - Public Week = Shows a filtered version of the week incidents for the public.
- Incident Type & Category:
  - Type = Dispatch and case occurred incident type from the Police Department.
    - There's over 200 incident types that can be selected, this information is only viewable in the information pop – up in the internal application.
  - Category = Incident types are classified into 14 categories.
    - Utilize for map symbology and classifying the large group of incident types.

# CREDENTIALS & URLs

---



## MAP & SITE URLs

- Sheriff Crime Incident Site: [GIS.MacombGov.Org/GO/Sheriff\\_Site](https://GIS.MacombGov.Org/GO/Sheriff_Site)
- Public Web Map: [GIS.MacombGov.Org/GO/Sheriff](https://GIS.MacombGov.Org/GO/Sheriff)
- Private Web App: [GIS.MacombGov.Org/GO/Sheriff\\_App](https://GIS.MacombGov.Org/GO/Sheriff_App)

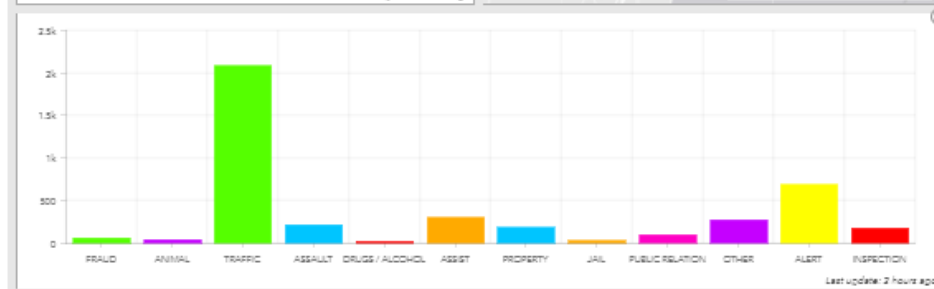
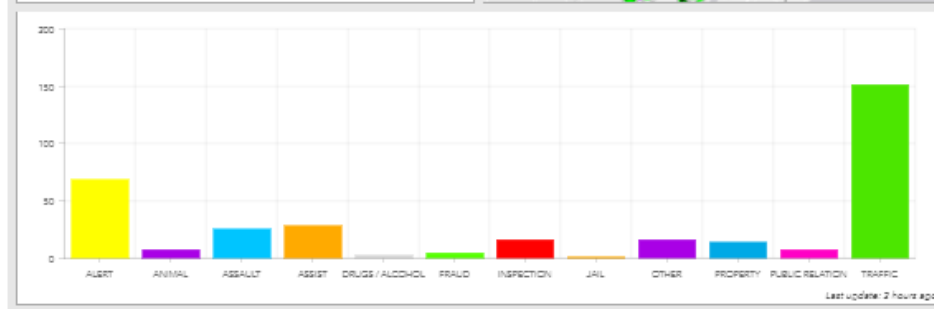
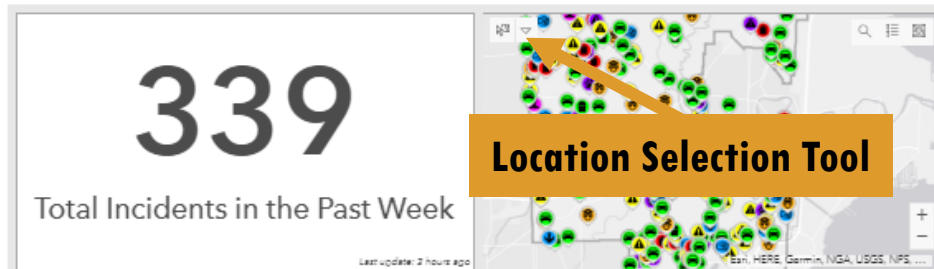
## SITE & APP LOGIN

- Username: mc\_sheriff1
- Password: mc\_sheriff7

## STEPS TO ACCESS

1. Directly go to the Macomb County Sheriff's Crime Incident Site (link above).
2. There will be a prompt to sign in using your ArcGIS organization credentials (login information above).
  - Sign in using the credentials for the Sheriff's Office, this login can be shared for whoever needs access to the internal site and application.
3. This will take you to the site where there's embedded dashboards and links to any resources the Sheriff's office might want to utilize.

# CRIME INCIDENT SITE



## Crime Incident Dashboards

- The site has two dashboards embedded that show total incidents from the past week and year.
- The user is able to see how many incidents happened in each category and where they occurred.
- There's a location selection tool available via the dashboards that will give you a quick stat on how many incidents occurred in the area selected, then the chart will update to break it down by incident category.
- Dashboards aren't available via mobile.

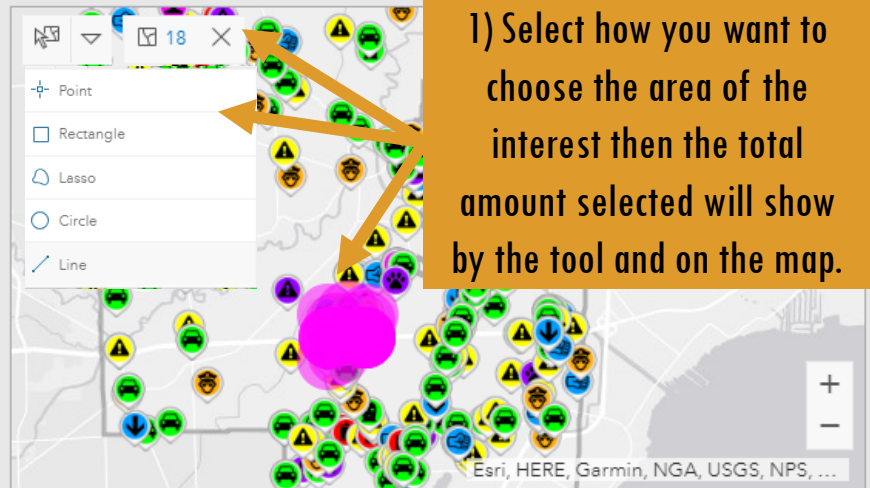
# CRIME INCIDENT SITE



# 17

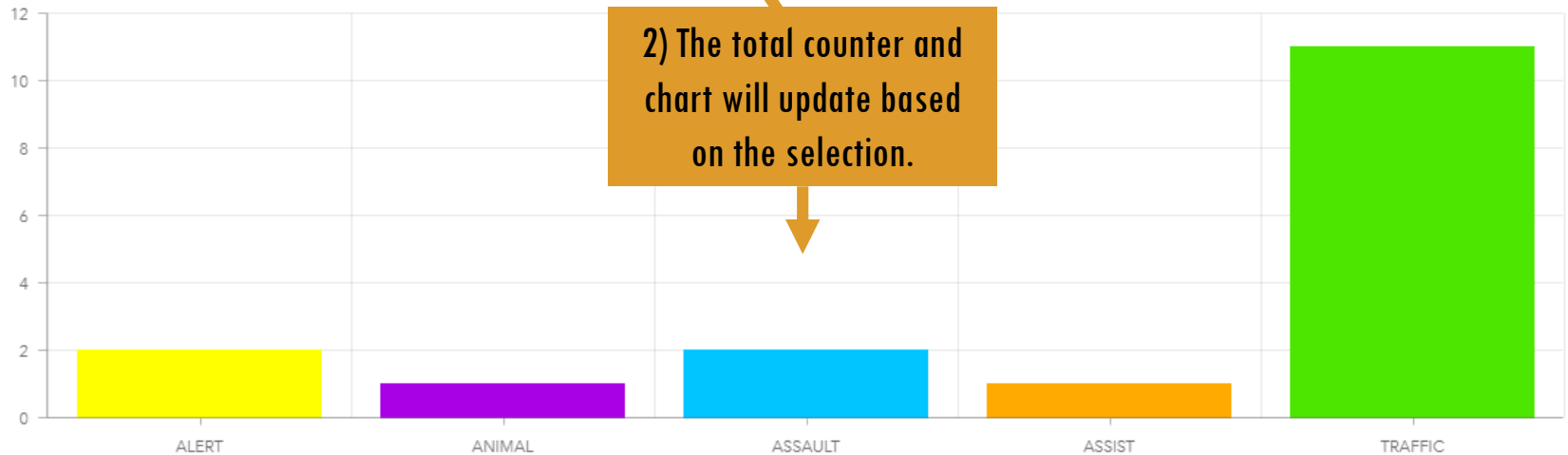
Total Incidents in the Past Week

*Last update: a few seconds ago*



1) Select how you want to choose the area of the interest then the total amount selected will show by the tool and on the map.

2) The total counter and chart will update based on the selection.



*Last update: a few seconds ago*



# WEB APP BASIC FEATURES



Sheriff's Office Crime Incidents & Sheriff Activity - Web App

**Search:**  
Look up and zoom to a specific address.


**Map Guide:**  
This opens up information about the application and links to this guide and the site.

**Zoom Control**

**Home:**  
Zooms back to the township extent (shown in the screenshot).

Anchor Bay  
Lake St Clair

4mi  
-83.007 42.755 Degrees



This web applications has advanced functionality to search, filter, analyze, and export crime incident data from the past week and up to the past year. All of these easy to use tools are available through the web and is mobile friendly. The data that's shown here is the same data that's powering the public crime incident web map. Intended for internal usage by the Macomb County Sheriff's Office.

Need help utilizing this application?  
[Web Application Guide](#)

GIS Site - Macomb County Sheriff.  
[Crime Incident Site](#)

Questions for Macomb County GIS?  
Email: [GISquestions@MacombGov.Org](mailto:GISquestions@MacombGov.Org)

# INCIDENT POP – UP & FORM



Sheriff's Office Crime Incidents & Sheriff Activity - Web App

On the public map and weekly incident layer, in the information pop-up (what appears when you click on specific incident) there's a link a google form where the user can submit information on an incident then the response will get sent the designed contact in the department.

1) Find the incident on the map by either searching an address, browsing the list of incidents tool, or zooming into the map.

2) Click on the specific incident so the information pop – up appears, then click the link “Incident Information Form”.

3) Information from the pop – up in the map will automatically populate the form with information on the incident.

TRAFFIC: 2019-00008986  
E VIEW DR / IMPERIAL LN  
MACOMB TOWNSHIP  
2/3/2019, 11:55 AM  
[Have information on this incident? Incident Information Form](#)  
[Zoom to](#)

## Macomb County Crime Incident Information Submission Form

This form is for the public citizens of Macomb County to submit any valid information on a crime incident that occurred for the Macomb County Sheriff's Office. The form and all information submitted is confidential.

\* Required

Email address \*

Your email

[Back to the Crime Map:](#)  
[GIS.MacombGov.Org/GO/Sheriff\\_CrimeMap](https://GIS.MacombGov.Org/GO/Sheriff_CrimeMap)



Incident Number?

This is the unique incident number for all crime incidents in Macomb County. This is the best way to identify exactly what incident the information pertains to. This will be auto populated if linked from the Crime Incidents web map.

2019-00008986

Type of Incident?

The type of incident the information relates to. This will be auto populated if linked from the Crime



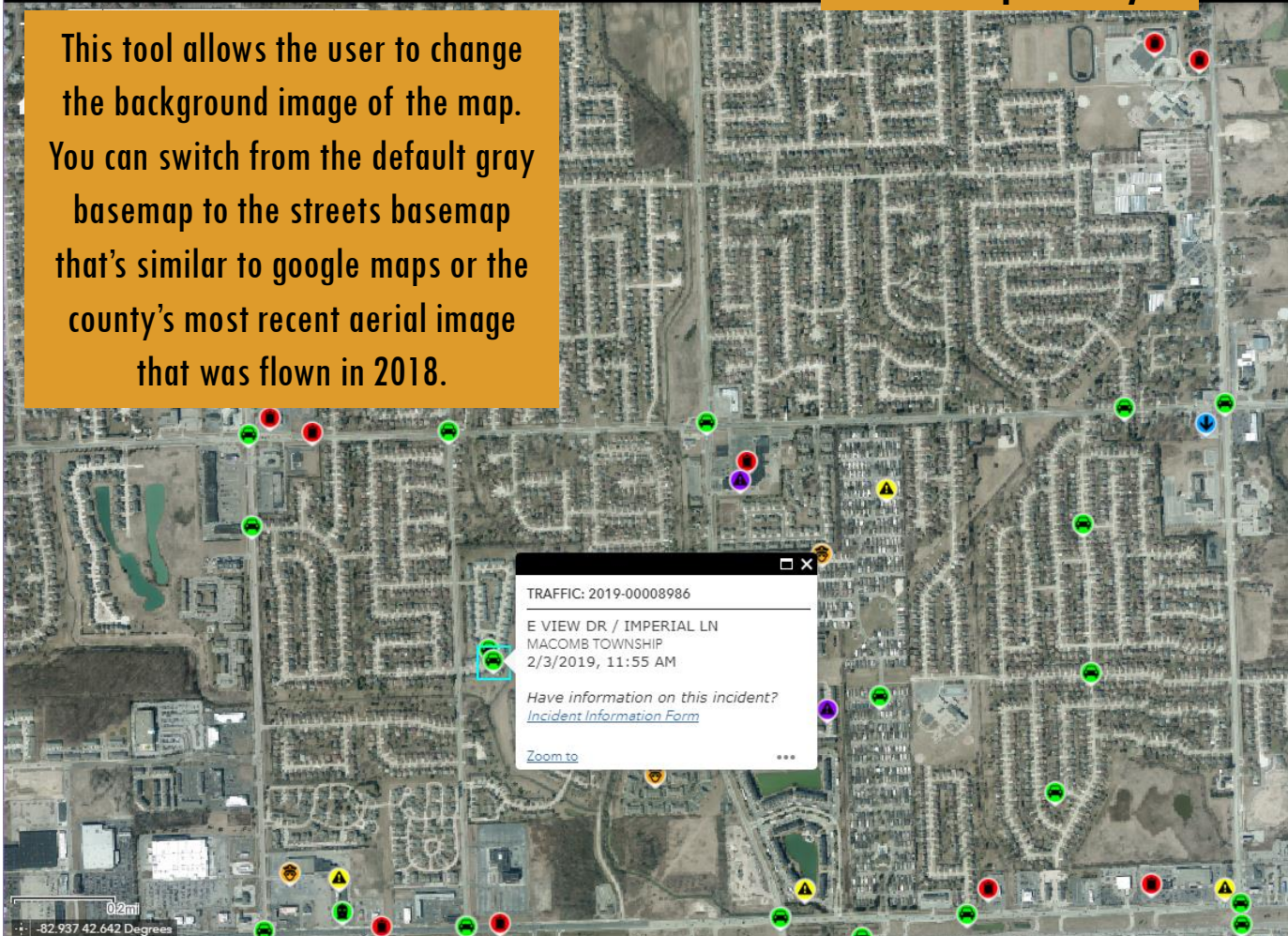
# BASEMAP GALLERY



Sheriff's Office Crime Incidents & Sheriff Activity - Web App

## Basemap Gallery

This tool allows the user to change the background image of the map. You can switch from the default gray basemap to the streets basemap that's similar to google maps or the county's most recent aerial image that was flown in 2018.



### Basemap Gallery

- Aerial 2015
- Aerial 2018**
- Bing
- Blank
- Canopy
- Dark
- Grey
- Infrared
- Lake
- Mint
- Navigation
- Night
- Streets
- Surface
- Topo
- USGS



# LIST OF INCIDENTS TOOL



**Sheriff's Office Crime Incidents & Sheriff Activity - Web App**

## List of Incidents

1) Use the circle power button to turn on / off the week incident layer or the year incident layer. When the layer is on the total incident count will appear.

2) Click on the layer to expand the list by category, then you can click on an incident category to get a list of individual incidents.

3) Click on an individual incident to see the location on the map and the incident information pop-up.

This tool allows the user to see the total amount of incidents from the past week and year, as well as being able to expand the list by the incident category. Then the user can see individual incidents and see their location on the map. The total incidents counts updates based on zooming / out of the map and filtering the data (shown on Filter Incidents slide).

The screenshot shows a web application interface. At the top, there's a search bar with the text "Find address or place". Below it is a map with numerous colorful markers representing incidents. A "List of Incidents" panel is open on the right side. It features a power button to toggle layers, a section for "Incidents Past Week" and "Incidents Past Year" with a count of 4,063. Below this is a list of incident categories with their respective counts: ALERT (674), ANIMAL (37), ASSAULT (217), ASSIST (304), DRUGS / ALCOHOL (17), RAUD (53), and INSPECTION (141). The "INSPECTION" category is expanded, showing a list of individual incident IDs. A pop-up window is visible on the map, displaying details for an "INSPECTION: SEX OFFENDER REGISTRY" incident, including the address "34360 GRATIOT AVE, Clinton Township" and the date "11/30/2018, 9:06 AM".

Category	Count
ALERT	674
ANIMAL	37
ASSAULT	217
ASSIST	304
DRUGS / ALCOHOL	17
RAUD	53
INSPECTION	141

Incident ID
2018-00042883
2018-00042884
2018-00042901
2018-00042906
2018-00042909
2018-00042910
2018-00042911
2018-00042912
2018-00042918

**INSPECTION: SEX OFFENDER REGISTRY**  
2018-00042901  
34360 GRATIOT AVE  
Clinton Township  
11/30/2018, 9:06 AM

# FILTER INCIDENTS TOOL



**Sheriff's Office Crime Incidents & Sheriff Activity - Web App**

**Filter Incidents**

Find address or place

Select the incident category or incident type that you are searching for from the drop down then switch the filter to on (will switch to green when on).

The user is able to search for incidents that occurred on a specific date or a specific time frame.

This tool allows the user to filter down the yearly incidents layer by incident category, incident type, and the date range. In this example the user was able to search for incidents related to assists that happened in January.

**Filter & Query**

- Incidents (Year) by Category  Category is ASSIST
- Incidents (Year) by Incident Type  Incident Type is
- Incidents (Year) by Date Range  Date is between 1/1/2019, 12:00 and 1/31/2019, 12:00

-82.857 42.616 Degrees

# FILTER INCIDENTS TOOL



**Sheriff's Office Crime Incidents & Sheriff Activity - Web App**

**Select & Export Incidents by Location**

1) Hit the "Select" button at the top of the tool, then choose how you want to draw the area of interest to select the incidents.

2) Select the area of the interest then incidents that are in the area will appear in bright blue. The number by the layer name shows how many incidents were selected. Click on the 3 dots by that number to get options on to export the selected data, get quick stats, and more.

**Select & Export by Location**

Select

Clear

Layer

Incidents Past Week 0

Incidents Past Year 55

Selection actions

- Zoom to
- Pen to
- Flash
- Export to CSV file
- Export to feature collection
- Export to GeoJSON
- Statistics...
- Create layer
- Save to My Content
- Clear selection

This tool allows the user to select incidents by a specific location or area, then being able to export the data in various formats or get quick statistics on the selected incidents. This example shows the filtered incidents from the "Filter Incidents" slide with a location selection of the north part of the community.



# INTERACTIVE CHART TOOL



**Sheriff's Office Crime Incidents & Sheriff Activity - Web App**

**Interactive Chart**

1) Either select incidents from the past week or year to create an interactive chart for.

2) You can select the option of "Use spatial filter to limit features" which allows the user to select an area to only chart those incidents. If this option is unchecked then all incidents on the map be included. Then hit "APPLY".

This tool allows the user to create an interactive chart of incidents from the past week or year. The chart shows total incidents by category and even has the option to spatially select incidents while making the chart.

**Interactive Chart**

Click one of the following task items to execute chart.

- Incidents Past Week
- Incidents Past Year

**Interactive Chart**

[CHARTS](#) Options [APPLY](#)

- Use spatial filter to limit features
  - Only features intersecting the current map area
  - Only features intersecting a user-defined area

Clear

The image shows a screenshot of a web application interface. On the left, a map displays numerous colorful incident markers (circles and triangles) scattered across a street grid. A search bar at the top left contains the text "Find address or place". On the right, a panel titled "Interactive Chart" is open, showing a dropdown menu with "Incidents Past Week" and "Incidents Past Year" options. Below this, another "Interactive Chart" panel is visible, showing a "CHARTS" tab, an "Options" section with a checked "Use spatial filter to limit features" option, and two radio button sub-options: "Only features intersecting the current map area" and "Only features intersecting a user-defined area". An "APPLY" button is at the bottom right of the options panel, and a "Clear" button is at the bottom of the entire interface. Arrows from the text boxes point to the "Incidents Past Week" dropdown and the "Use spatial filter to limit features" checkbox.



# INTERACTIVE CHART TOOL



Sheriff's Office Crime Incidents & Sheriff Activity - Web App

3) The bar chart will appear and the selected incidents will have a purple ring over the icon symbology.

4) When you hover over an incident category on the chart it will give you the total incidents of that category and highlight incidents in that category on the map with red boxes. In this example the category traffic is being hovered over and the incidents are highlighted on the map.

5) Expand the chart to full screen and customize the chart settings.

A screenshot of a web application interface for crime incidents. The main area is a map with various colored icons representing different incident categories. A bar chart is overlaid on the map, showing the count of incidents for each category. The 'TRAFFIC' category is highlighted in blue, and its bar is expanded to show a total of 143 incidents. A settings gear icon is visible in the top right corner of the chart area. The map shows several drainages: Cranberry Marsh Drain, Cranberry Drain, Plum Brook, Harrington Drain, Faulman Drain, Harrington Drain, and Sweeney Drain. A scale bar indicates 1 mile, and the coordinates are -82.752 42.603 Degrees.

Category	Count
ALERT	~10
DRUGS / ALCOHOL	~25
OTHER	~15
TRAFFIC	143

# INTERACTIVE CHART TOOL

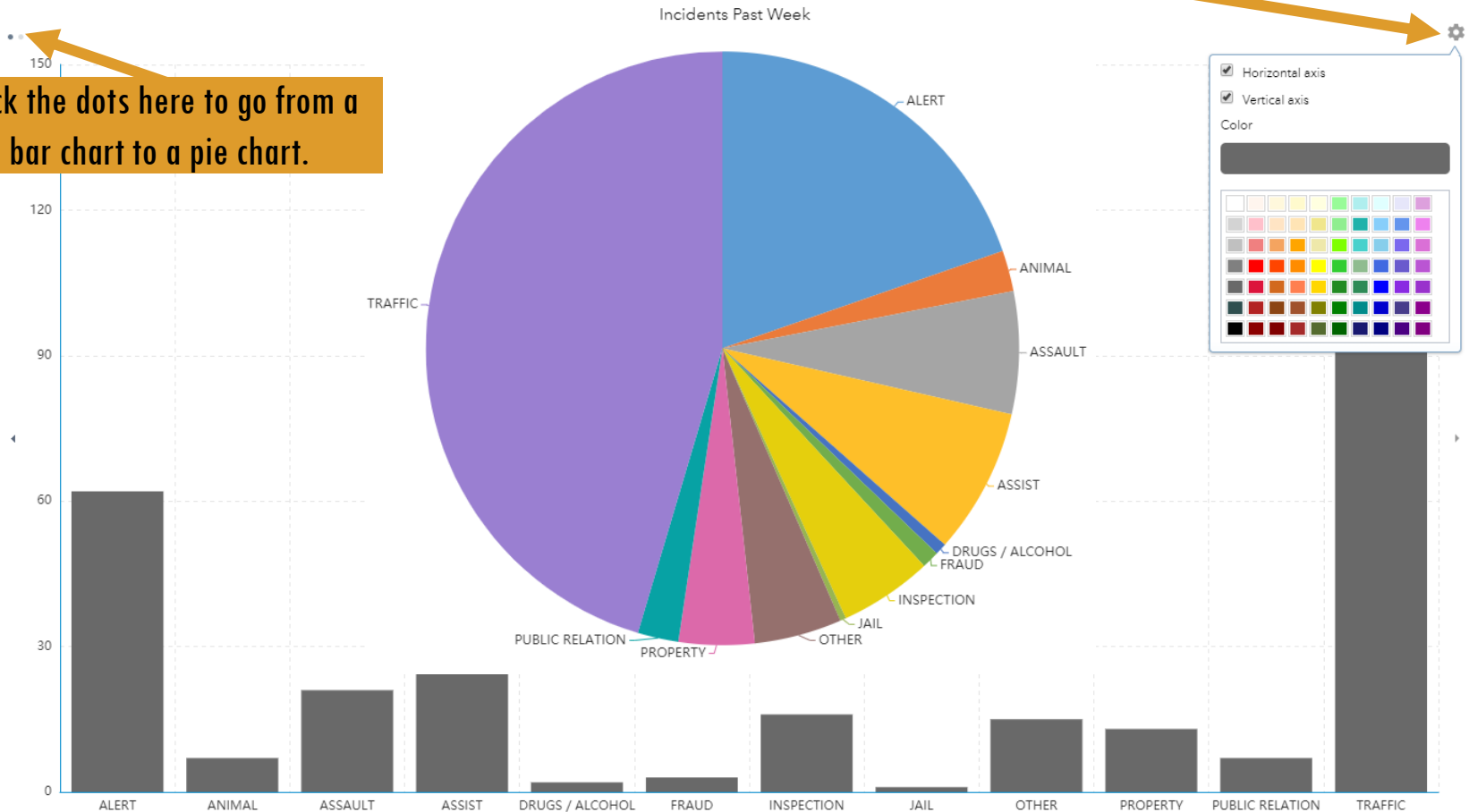


## Interactive Chart Examples

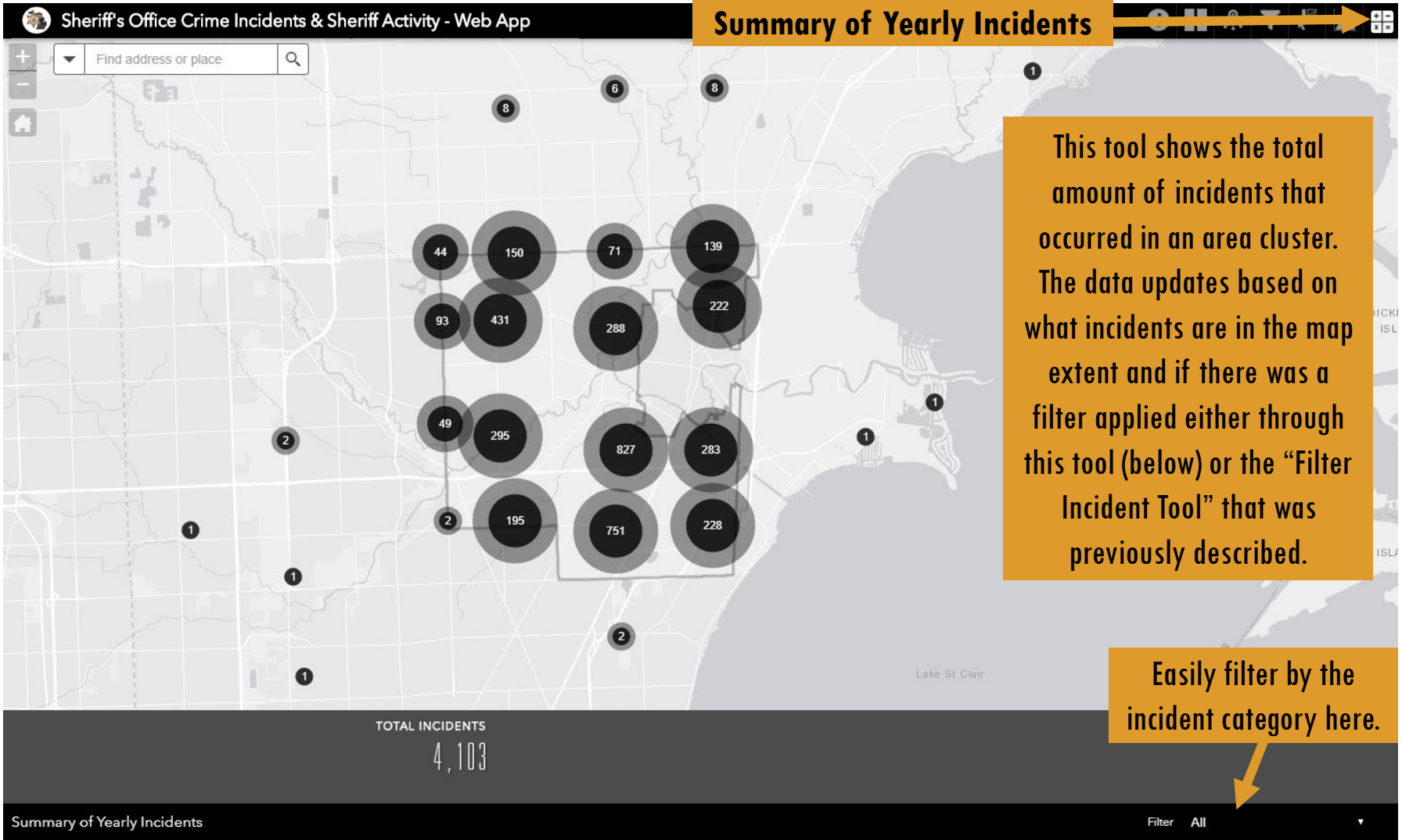
Chart

Click the settings here to change the color of the charts.

Click the dots here to go from a bar chart to a pie chart.



# SUMMARY TOOL



This tool shows the total amount of incidents that occurred in an area cluster. The data updates based on what incidents are in the map extent and if there was a filter applied either through this tool (below) or the "Filter Incident Tool" that was previously described.

Easily filter by the incident category here.

# MOBILE FRIENDLY



Find address or place

**List of Incidents**

Incidents Past Week **445**

ALERT	81
ANIMAL	5
ASSAULT	31
ASSIST	33
DRUGS / ALCOHOL	2

Find address or place

**List of Incidents**

1 of 1

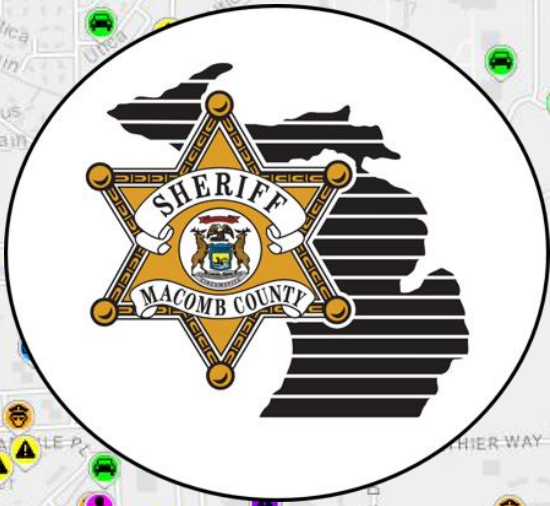
**ASSAULT: 2019-00003151**

24162 HICKORY LN  
Clinton Township  
1/25/2019, 9:49 AM

Have information on this incident?  
[Incident Information Form](#)

...





# Macomb County Sheriff's Office



[GIS.MacombGov.Org/GO/Sheriff\\_Site](https://GIS.MacombGov.Org/GO/Sheriff_Site)

# Macomb County Planning & Economic Development



[PED.MacombGov.Org](https://PED.MacombGov.Org)

